

Procedure:

First Time application of Tammy Taylor Miracle Manicure Base Coat



Miracle Manicure Base Coat (First Time)

How to do an Express Miracle Manicure:
30 minutes (Dry)

Note: To turn this into a Full 1 hour (Spa) Miracle Manicure, add in the soak, massage, exfoliate, etc. at Step #3

1. Sanitize Hands

- using Tammy Taylor Sanitize (available in Fresh Peach and Gardenia fragrances)

2. Remove Polish (All 10 Nails)

- using Tammy Taylor Polish Remover (available in Fresh Peach and Gardenia fragrances)

Apply to a Towelette, place on nail, rock back and forth and wipe off nail. Your color nail polish comes off in seconds.

3. Cuticle Care (All 10 Nails)

Push back cuticle with a cuticle pusher or Pterygium Stone, Or...
Perform a (Spa) Manicure

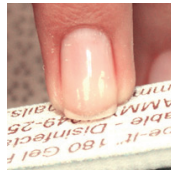


3.

4. File Nails (All 10 Nails)

4a. Shape the Free-edge using the Shape-It File.

4b. Lightly Buff the shine off the natural nail to remove any oils, lotion, residue, etc. Use the Buff-It Buffer.



4a.



4b.

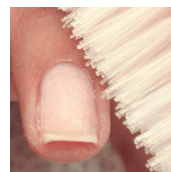
5. Clean Nails (All 10 Nails)

Nails need to be extra "Clean" before the application of "Miracle Manicure Base Coat":

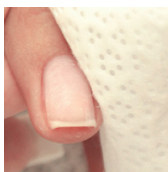
5a. Scrub nails with a plastic manicure brush and soap & water; towel dry thoroughly.

5b. Clean Nails using a Wipe-It moistened with Clean-It.

Note: Make sure there is no oil or lotion residue left on the nails.



5a.



5b.

6. Apply Miracle Manicure Base Coat (All 5 nails on one hand)

Note: (Cure each coat first, before applying each additional coat) Apply just like regular base coat.

Cap the tip to ensure long wear.

First Time: Apply 2-3 coats



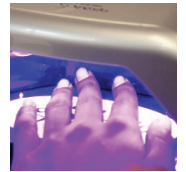
6.

Note: Only apply 1-2 coats when doing a "Re-Fresh" (Fill-in)

7. Cure each coat of Miracle Manicure Base (All 5 nails on one hand)

(2-min in a 36-Watt UV Lamp or 40 seconds in an 25-35-Watt LED Lamp)

• Repeat the process on the other hand

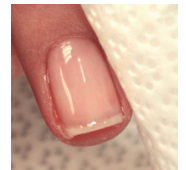


7.

8. Clean-It (All 10 Nails)

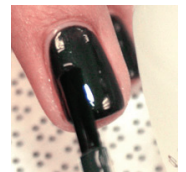
After all the coats of Miracle Manicure Base Coat have been Cured, clean the residue off the surface with a Wipe-It moistened with Clean-It.

Note: (To insure surface is squeaky clean, wipe "again" with acetone before applying nail polish)



8.

9. Apply regular Color Nail Polish (Tammy Taylor Nail Colour) (All 10 Nails)



10. Apply regular Top Coat (Tammy Taylor Super Dry Top Coat) (All 10 Nails)

9.

11. Apply Tammy Taylor Quick Dry and Cuticle Conditioner Oil (All 10 Nails)

Application suggestions:

Miracle Manicure Base Coat continues to move and does not Cure (harden) until it is put under the curing light. To insure the entire nail is covered: Apply a "thin" coat of Miracle Manicure Base Coat to all 5 nails, then go back and do a **quick "stroke"** over the whole nail surface, just before putting nails into the curing light. Pay special attention to the sides of the nail near the nail groove.

Note: As you get quicker, there will be less time for the Miracle Manicure Base Coat to move, so you will "not" need to go back over it before curing.

Note 2: Also, **Miracle Manicure Base Coat** keeps Polish from peeling.

Soak Off Directions for Miracle Manicure Base Coat:

1. **Buff** down the surface of the **Miracle Manicure Base Coat** about 50%, using the Gel Buff-It file or the Gel Shape-It file.

2. **Soak** in acetone for 5 minutes and **Buff Off** (the softened **Miracle Manicure Base Coat** does "not" peel off - but it is easily buffed off).

Note:

The **Miracle Manicure** does "not" need to be soaked off.

• A **Re-Fresh** is suggested: Buff down 50% of the thickness using the Gel Buff-It file or the Gel Shape-It file and apply a fresh coat of **Miracle Manicure Base Coat** over the existing **Miracle Manicure Base Coat**.

• (See **Re-Fresh (Fill-in) Directions**)

Procedure:

“Re-Fresh” (Fill-In) with Tammy Taylor Miracle Manicure Base Coat

Miracle Manicure Base Coat (Re-Fresh)

How to do a Miracle Manicure Express

“Re-Fresh” (Fill-In):

30 minutes (Dry)

Note: To turn this into a Full 1 hour (Spa) Miracle Manicure, add in the soak, massage, exfoliate, etc. at Step #3

1. Sanitize Hands

- using Tammy Taylor Sanitize (available in Fresh Peach and Gardenia fragrances)

2. Remove Polish (All 10 Nails)

- using Tammy Taylor Polish Remover (available in Fresh Peach and Gardenia fragrances)
Apply to a Towelette, place on nail, rock back and forth and wipe off nail. Your color nail polish comes off in seconds.

3. Cuticle Care (All 10 Nails)

Push back cuticle with a cuticle pusher or Pterygium Stone, Or...
Perform a (Spa) Manicure



3.

4. File Nails (All 10 Nails)

4a. Shape the Free-edge using the Shape-It File.

4b. File using the Shape-It File. Lightly file down about 50% of the thickness of the Miracle Manicure Base Coat (the Miracle Manicure Base Coat does not need to be removed before applying a fresh coat).

4c. Buff the surface smooth using the Buff-It Buffer.



4a.



4b.



4c.

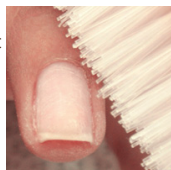
5. Clean Nails (All 10 Nails)

Nails need to be extra “Clean” before the application of “Miracle Manicure Base Coat”:

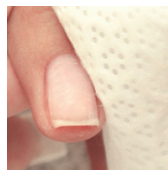
5a. Scrub nails with a plastic manicure brush and soap & water; towel dry thoroughly.

5b. Clean Nails using a Wipe-It moistened with Clean-It.

Note: Make sure there is no oil or lotion residue left on the nails.



5a.

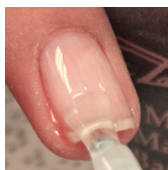


5b.

6. Apply Miracle Manicure Base Coat (All 5 nails on one hand)

Note: (Cure each coat first, before applying each additional coat) Only apply 1-2 coats when doing a “Re-Fresh” (Fill-in) Apply just like regular base coat.

Cap the tip to ensure long wear.



6.

7. Cure each coat of Miracle Manicure Base (All 5 nails on one hand)

(2-min in a 36-Watt UV Lamp or 40 seconds in a 25-35-Watt LED Lamp)

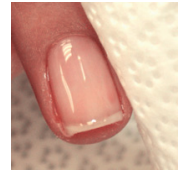
- Repeat the process on the other hand



7.

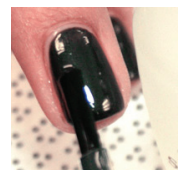
8. **Clean-It (All 10 Nails)** After all the coats of Miracle Manicure Base Coat have been Cured, clean the residue off the surface with a Wipe-It moistened with Clean-It.

Note: (To insure surface is squeaky clean, wipe “again” with acetone before applying nail polish)



8.

9. Apply regular Color Nail Polish (Tammy Taylor Nail Colour) (All 10 Nails)



9.

10. Apply regular Top Coat (Tammy Taylor Super Dry Top Coat) (All 10 Nails)

11. Apply Tammy Taylor Quick-Dry and Cuticle Conditioner Oil (All 10 Nails)

Application suggestions:

Miracle Manicure Base Coat continues to move and does not Cure (harden) until it is put under the curing light. To insure the entire nail is covered: Apply a “thin” coat of Miracle Manicure Base Coat to all 5 nails, then go back and do a quick “stroke” over the whole nail surface, just before putting nails into the curing light. Pay special attention to the sides of the nail near the nail groove.

Note: As you get quicker, there will be less time for the Miracle Manicure Base Coat to move, so you will “not” need to go back over it before curing.

Note 2: Also, **Miracle Manicure Base Coat** keeps Polish from peeling.

Soak Off Directions for Miracle Manicure Base Coat:

1. **Buff** down the surface of the **Miracle Manicure Base Coat** about 50%, using the Gel Buff-It file or the Gel Shape-It file.

2. **Soak** in acetone for 5 minutes and **Buff Off** (the softened **Miracle Manicure Base Coat** does “not” peel off - but it is easily buffed off).

Note:

The **Miracle Manicure** does “not” need to be soaked off.
• A **Re-Fresh** is **suggested**: Buff down 50% of the thickness using the Gel Buff-It file or the Gel Shape-It file and apply a fresh coat of **Miracle Manicure Base Coat** over the existing **Miracle Manicure Base Coat**.

Note: On **First Time** applications, you can apply 2-3 coats

Procedure:

Polishing of Tammy Taylor Miracle Manicure Base Coat



How to apply

Color Nail Polish

- Apply Color Nail Polish in long strokes (this will keep nails smooth and not streaky)
- Remove the brush from the polish bottle and wipe it one way against the neck of the bottle, in order to get a ball of polish on one side of the brush
- Place the brush in the center of the nail near the cuticle area and stroke it out in one long stroke, then lift the brush and continue in long strokes until the entire nail is covered (about 3 strokes)
- Repeat the process on the other hand
- Remember to retail a bottle of Tammy Taylor Nail Colour (Polish) to your client to touch up their nails in between manicures.

Note: Miracle Manicure Base Coat keeps Polish from peeling.

How to Apply

Clear Top Coat

- Apply clear top coat in long strokes (this will keep nails smooth and not streaky)
- Remove the brush from the polish bottle and wipe it one way against the neck of the bottle, in order to get a ball of polish on one side of the brush
- Place the brush in the center of the nail near the cuticle area and stroke it out in one long stroke, then lift the brush and continue in long strokes until the entire nail is covered (about 3 strokes)
- Repeat the process on the other hand
- Remember to retail a bottle of Tammy Taylor Super Dry Top Coat to your client to keep their nails shiny in between manicures.

How to apply Tammy Taylor

Quick Dry and Cuticle Conditioner Oil

- Let nails dry for about 3 minutes, after applying nail polish and top coat
- Apply a drop of Tammy Taylor Quick Dry and Cuticle Conditioner Oil to all nails
- Tip the nails downward so the oil covers the entire nail
- Let dry for about 5 minutes and the nails should be completely dry to the touch, then rub the oil into the cuticles
- Remember to retail a bottle of Tammy Taylor Quick Dry and Cuticle Conditioner Oil to your client for daily cuticle conditioning

Soak Off Directions for Miracle Manicure Base Coat:

1. Buff down the surface of the **Miracle Manicure Base Coat** about 50%, using the Gel Buff-It file or the Gel Shape-It file.

2. Soak in acetone for 5 minutes and **Buff Off** (the softened **Miracle Manicure Base Coat** does “not” peel off - but it is easily buffed off).

Note:

The **Miracle Manicure** does “not” need to be soaked off.

- A **Re-Fresh is suggested**: Buff down 50% of the thickness using the Gel Buff-It file or the Gel Shape-It file and apply a fresh coat of **Miracle Manicure Base Coat** over the existing **Miracle Manicure Base Coat**.
- **(See Re-Fresh (Fill-in) Directions)**

Gel curing Lamps and Full curing Time:

36-Watt UV Lamp	(2-minutes)
25-35 Watt LED Lamp	(40 seconds)

Quick cure for Gel and Nail Gelz Gel Paint:

20	seconds in a 36-Watt UV Lamp
5	seconds in a 25-35 Watt LED Lamp